

# Applied Science – Two Options

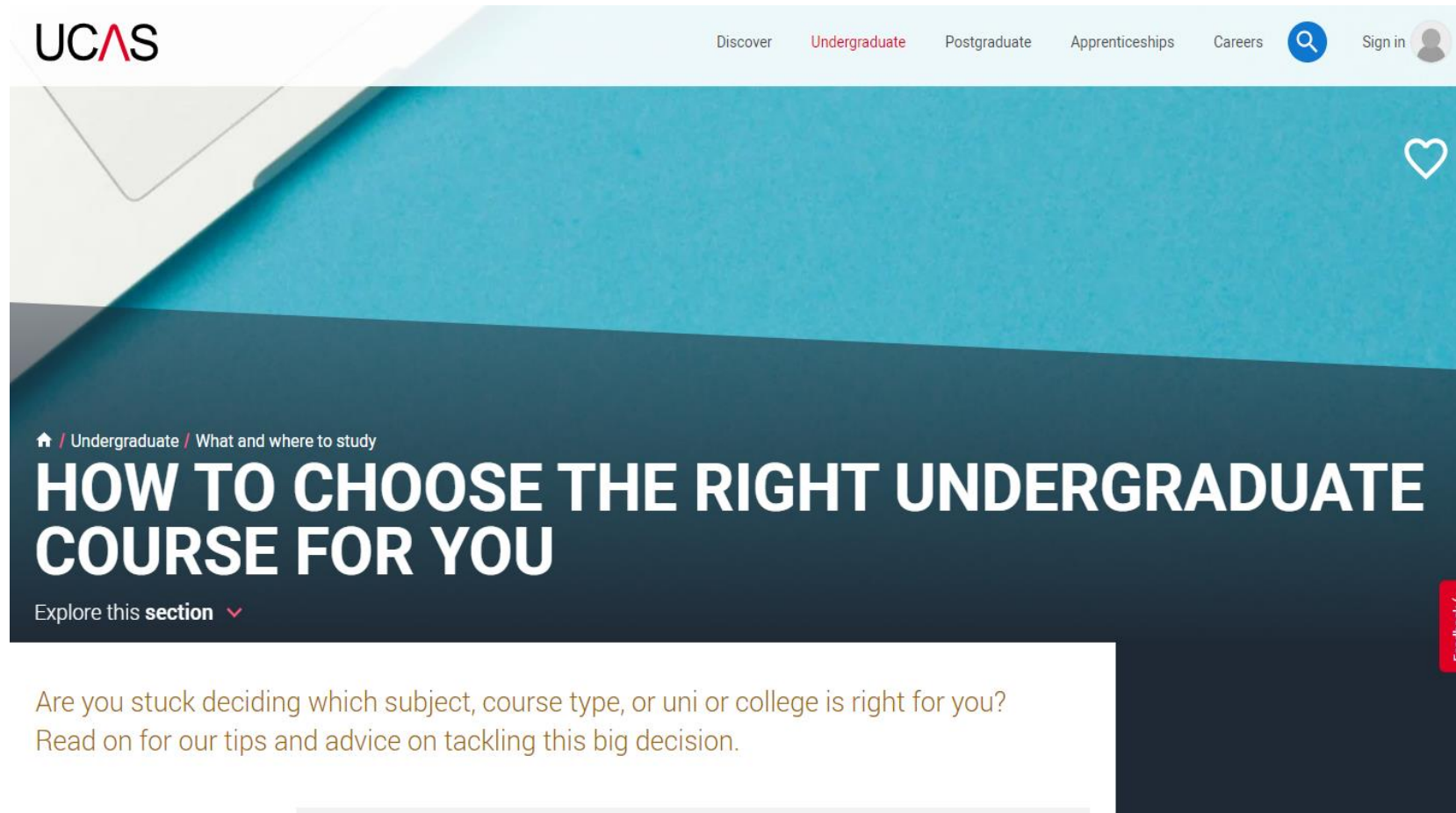
## **Pearson BTEC Level 3 National Extended Certificate in Applied Science**

- 1 A level Equivalent
- 2 Exam Units
- 2 Coursework Units
  
- Provides UCAS Points

## **Pearson BTEC Level 3 National Extended Diploma in Applied Science**

- 3 A level Equivalent
- 4 Exam Units
- 9 Coursework Units
  
- Access to Vocational Degrees

# In preparation make sure you are doing the right course for your future.



The screenshot shows the UCAS website interface. At the top left is the UCAS logo. The navigation bar includes links for 'Discover', 'Undergraduate' (highlighted in red), 'Postgraduate', 'Apprenticeships', and 'Careers'. There is a search icon and a 'Sign in' button with a user profile icon. Below the navigation bar is a teal header with a white heart icon. The main content area has a dark blue background with the breadcrumb 'Home / Undergraduate / What and where to study' and the title 'HOW TO CHOOSE THE RIGHT UNDERGRADUATE COURSE FOR YOU' in large white letters. Below the title is a link 'Explore this section' with a dropdown arrow. A red 'Feedback' button is visible on the right side. The article text begins with 'Are you stuck deciding which subject, course type, or uni or college is right for you? Read on for our tips and advice on tackling this big decision.'

Use this UCAS website as a starting point.

Look at the entry requirements, check that the BTEC is accepted

<https://www.ucas.com/undergraduate/what-and-where-study/how-choose-right-undergraduate-course-you>

# Think about the different Applied Science options.

## Extended Certificate in Applied Science

Links well with

- Health & Social Care Diploma (2 Blocks)
- Sports CTEC Diploma (2 Blocks)

Or two other 1 block subjects

Provides UCAS Points as shown to help support your entry onto university courses

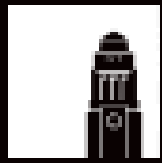
Extended Certificate	Points
D*	56
D	48
M	32
P	16

## Extended Diploma in Applied Science

This takes all three blocks and so you do no other subject.

Meets the entry requirements of many University courses especially those that are vocational (ie directly leads onto a career)

The next few slides show some examples of the degrees you can take at local Universities (Leeds, Bradford and Huddersfield)



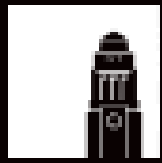
## Course overview



The University of Leeds' Diagnostic Radiography course gives you everything you need to practice in one of modern medicine's most exciting fields. Combining science, technology and patient care, this course prepares you for a career at the forefront of emerging technology for diagnosis and treatment.

### **BTEC**

BTEC Level 3 Extended Diploma (QCF): distinction/distinction/distinction and must contain at least one-third science content at distinction.



UNIVERSITY OF LEEDS

# Nursing (Adult) BSc

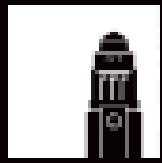


Our adult nursing course offers a supportive, engaging path to becoming a confident registered nurse. You'll learn from experts who are informed by active research, ensuring you'll have the most up-to-date knowledge to help people.

This degree has a 50:50 split between academic study and clinical placements for practical, hands-on experience. This allows you to develop your strength as a nurse as you apply the knowledge and skills needed to care for adults in today's complex and ever-changing healthcare environment.

## **BTEC**

BTEC Level 3 Extended Diploma (QCF): distinction/distinction/distinction and must contain at least one-third science content at distinction.



Nutrition is a fast-moving discipline that focuses on understanding the role of foods, nutrients and the overall “diet” in maintaining health and preventing disease. Nutritionists play an important role in providing and implementing evidence-based nutritional guidelines and dietary recommendations meaning the scope of career options for Registered Nutritionists is wide-ranging.

## **BTEC**

D\*DD in a relevant Science subject. We do not accept Health and Social Care or Sports and Exercise Science.



## Overview

At the University of Bradford we've been teaching pharmacy since 1927, and are experts in preparing students for the world of clinical practice.

Our innovative and award-winning degree programme, delivered predominately by Team-Based Learning (TBL), has been designed by pharmacists, educators, students and employers to ensure that you will graduate not only with the necessary knowledge and skills of a pharmacy graduate, but also with the confidence, communication, team-working, and problem-solving skills needed to secure employment. Our classes simulate the workplace and you will work in small teams to solve real-world problems, many of which are brought into the classroom from pharmacy practice by our team of pharmacist teacher-practitioners.

### **BTEC Extended Diploma**

For applicants who have taken the new BTEC Extended Diploma assessed by written examinations and coursework: DDD. Applied Science with a minimum of four Chemistry or Biology units at Distinction.

## Overview

This programme is designed for students wishing to develop knowledge and skills specifically relevant to sport and exercise settings, as well as more traditional physiotherapy environments.

Graduates gain a professional Master's qualification in physiotherapy, opening up a range of career opportunities as a physiotherapist in the sport, exercise and health and wellbeing sectors. It also provides foundation for further research study.



### **BTEC Extended Diploma**

DDD in a relevant Health, Science or Sport subject. Applied Science BTEC Extended Diploma applicants will require a minimum of one Biology unit at Distinction.

## Overview

Diagnostic Radiography (or Medical Imaging) is the practice of using various forms of radiation to produce high-quality images which aid in the diagnosis and subsequent treatment of injury or disease.

It is a technology-dependent discipline, which has patient care as its main concern.

Historically, radiographers primarily used X-rays. With advances in technology, radiography also embraces techniques such as computed tomography (CT scanning), ultrasonography, magnetic resonance imaging (MRI) and nuclear medicine.

During your course you will have the opportunity to participate in all of these techniques, and you may then decide to specialise in one or more of them when you are qualified.



**BTEC Extended  
Diploma**

DDM. Health or Science subject required.

## Overview

This course develops skills in core biomedical, chemical and forensic sciences, helping you become a skilled forensic practitioner.

The emphasis is on biosciences, and then shifts towards disease processes and forensic investigation of physical evidence types.

In addition to the pursuit of core sciences, you will study forensic investigation in anthropology and topics relating to archaeology - including the degradation of human remains and physical materials - which will develop your skills in forensic interpretation. The final year develops your professional skills through a forensic research dissertation.



**BTEC Extended  
Diploma**

DMM. Science subject required - must include a minimum of three Chemistry or Biology-related units.

## About the course

*DMM* in BTEC Level 3 Extended Diploma in Applied Science.

### Reasons to study

1. This course is accredited by the Royal Society of Biology, which provides you with industry-wide recognition regarding the quality of your qualification.
2. Your learning will take place in new £18.2 million facilities such as our biological sciences labs, using scientific instrumentation to gain hands-on experience.
3. Enhance your graduate prospects by undertaking a work placement year. Previous placements have been with the Spanish National Cancer Research Centre and Public Health England.

From the tallest tree to the smallest cell, all life stems from biochemical processes. Investigating these processes right down to the molecular level has brought about huge leaps in our understanding across many disciplines – from evolution and reproduction to disease prevention and engineering. Biochemical research will be extremely important in the coming decades. If you want to be part of it then this course could be a great place to start. Biochemistry is the investigation of the chemical processes that leads to life and the processes of metabolic regulation, nervous integration and information storage by biochemical systems. The ability of biological machines to reproduce and pass on information of our evolutionary history are all driven by chemical processes that are in themselves becoming very well understood and well characterised at the molecular level. Biochemical research has the capacity to unlock stem cell therapies and overcome cancer and dementia. It also has much to offer engineering in advanced materials and novel solutions to problems that have evolved over billions of years. The potential for biochemical research in the coming decades is vast and the course is the starting point for many areas of further study and application in industry.

## About the course

On our Biomedical Science BSc(Hons) degree course, you'll practise the skills relevant to working in a clinical laboratory. The course will explore key subject areas such as blood science, immunology, physiology and pathology, preparing you for a range of careers in healthcare including diagnostics and clinical research. By delivering a curriculum that is relevant to the needs of society, this degree will also provide opportunities for employment in other areas such as teaching, government agencies, pharmaceutical and biotech-industries.

### Reasons to study

1. The course is accredited by the Institute of Biomedical Science (IBMS).
2. Your learning will take place in new £18.2 million facilities for applied science, such as biological sciences labs.
3. You can enhance your graduate prospects by undertaking a work placement year in a research lab or in industry.

*DMM* in BTEC Level 3 Extended Diploma in Applied Science.

## About the course

Understanding the impact of human activities on our environment is essential to protecting it for future generations. The Environmental and Analytical Science BSc(Hons) degree at Huddersfield gives you a comprehensive understanding of Earth's systems and equips you with the skills and knowledge of an analytical scientist.

### Reasons to study

1. This course is accredited by the Committee of Heads of Environmental Sciences (CHES), the education committee of the Institution of Environmental Sciences (IES).
2. Field-trips are an integral part of your course and provide hands on practical experience that enhances your understanding of the topic.
3. Make industry connections and gain valuable work experience by undertaking a work placement year.

*DMM* in BTEC Level 3 Extended Diploma in Applied  
Science.



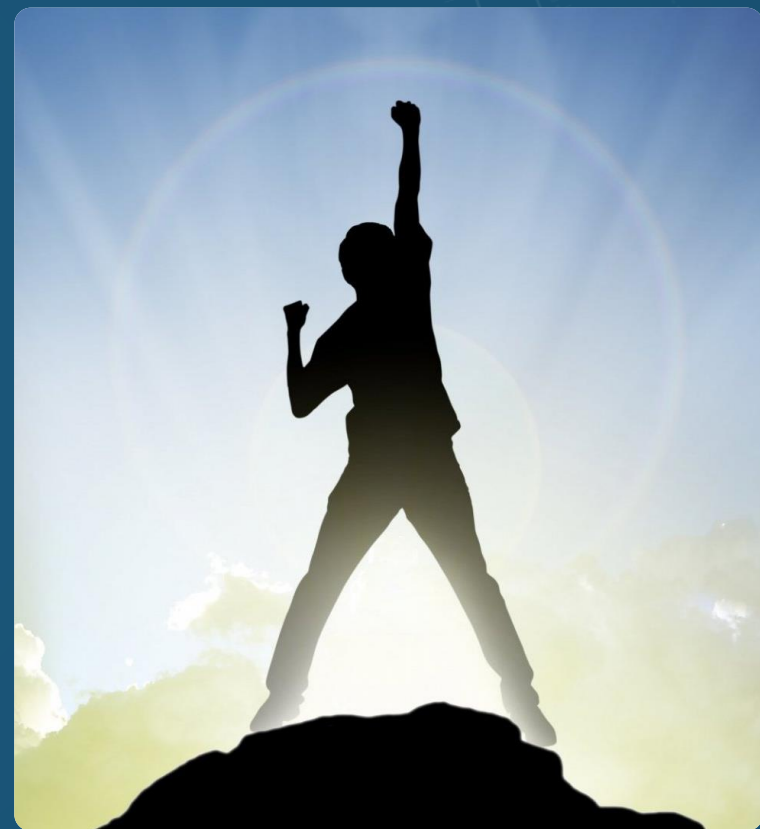
**Notre Dame**  
CATHOLIC SIXTH FORM COLLEGE

# SO THINK ABOUT DOING APPLIED SCIENCE @NOTRE DAME

2021

# RESULTS IN THE TOP 15% OF COLLEGES IN THE COUNTRY

The students of Notre Dame have achieved results that place us in the top 15% of colleges for the last 6 Years in a row.



**100% PASS RATE AND 87% OF STUDENTS (2022) WERE ACCEPTED ON TO THEIR FIRST-CHOICE DESTINATION.**



**DEGREE**



**APPRENTICESHIP**



**WORK  
PLACEMENT**